



CYAA 2025/2026
Summer Series @
RMYS

Top Yacht Boat sign on
with PoB info for each
race



SAILING INSTRUCTIONS

CLASSIC YACHT ASSOCIATION of AUSTRALIA

2025/2026 SUMMER SERIES

5th Oct - 15th March 2026



2025 /2026 Summer Series
[Entries and Results](#)

Organised and conducted by the ROYAL MELBOURNE YACHT SQUADRON
on behalf of the Classic Yacht Association of Australia Inc. A0034323W



1 RULES.

The RMYS 2025/2026 Summer Series of CYAA races will be governed by:

- 1.1 The Australian Sailing Racing Rules of Sailing (RRS 2025-2028).
- 1.2 The Special Regulations and Prescriptions of Australia Sailing Part 1 For Racing Boats apply.
- 1.3 The [requirements of the port of Melbourne Harbour Master 13.1 Sept 29 2023](#)
- 1.4 The [Marine Safety Act 2010 \(Vic\)](#) and the [Marine Safety Regulations 2012 \(Vic\)](#).
- 1.5 Any Skipper subject of a complaint by a Ship's Master for any reason whatsoever may be disqualified.
- 1.6 AS Safety Category 6 shall apply. AS Safety Category 7 yachts may be accepted with the express permission of the Organizing Authority.
- 1.7 Boats shall lodge an appropriate Safety Compliance Declaration with their home club for years 2025
- 1.8 Crews on yachts without lifelines and on yachts with lifelines in wind conditions over 15 Knots must wear PFD1 – Failure to do so will result in boats being scored DSQ
- 1.9 [DP] Boat sign on and crew on board declarations **MANDATORY** for all participating boats on each of the CYAA 2025 Winter Series of races to register their Crew on board and their contact emergency contacts declarations via the TopYacht Entry System 15 minutes prior to race warning signal via the following link - <http://tymob.net.au/1824>.
- 1.10 RRS Rule 44.1 is changed. The two turns penalty is replaced by the one turn penalty

2 NOTICES TO COMPETITOR.

- 2.1 Notices to competitors will be posted on the [RMYS Website](#).

3. CHANGES TO SAILING INSTRUCTIONS

- 3.1 Any change to the Sailing Instructions will be posted before 09:00 on the day it will take effect, except that any change to the schedule of races will be posted by 20:00 on the day before it will take effect.
- 3.2 Changes to these Sailing Instructions will be available at [RMYS website](#).

4 CODE OF CONDUCT

- 4.1 [DP] Competitors and support persons shall comply with reasonable requests from race officials.

5 SIGNALS MADE ASHORE

- 5.1 Signals made ashore will be made on the RMYS Starting tower.

6. RACING AREA

- 6.1 Racing area will be in the northern waters of Port Phillip.

7 CLASS FLAG

- 7.1 The Class flag is the CYAA Buirgee. Division flags Div 1 Blue, Div 2 Yellow, Div 3 Green

8. SIGNING ON

- 8.1 [DP] All boats shall report their intention to start the race via the following link
<http://tymob.net.au/1824>.
- 8.2 Boats not indicating their intention to start by 1015 hrs. to start will be deemed not starting.
- 8.3 A boat that retires from this race shall notify the RMYS race committee at the first reasonable opportunity by VHF Channel 72.

9 THE START.

- 9.1 CYAA class and international flags will be used as signals for these races.
- 9.2 Each race will be started using RRS 26 with the warning signal made five minutes before the division starting signal. The scheduled allocated division warning signal for this race will be at 1025 hrs.
- 9.3 Subsequent division warning signals will follow the start of first division at 5 minute intervals
- 9.4 The RMYS Tower Start line is a line between the vertical line on the centre of the western face (breakwater) race tower and RMYS mark A.
- 9.5 The RMYS Race committee boat start line is between the displayed orange flag and an orange mark.
- 9.6 The RMYS Race committee may use a countdown sequence for the start on Channel 72.
- 9.7 A boat starting later than 10 minutes after her starting signal will be scored Did Not Start without a hearing. This changes rule Appendix A5.

10 THE COURSES.

- 10.1 RMYS CYAA Courses will be use the RMYS Courses as described in the RMYS Sailing Instructions Descriptions of these RMYS courses are displayed on page 4 and 5 of these sailing instructions. Course Maps are [available at this link](#)
- 10.2 The selected course for this race shall be announced 15 minutes before the scheduled start time on channel 72 and displayed by international flags and numerals on the RMYS Race Tower or from the signal mast of the RMYS Committee Boat.

11. MARKS

- 11.1 [Location of RMYS marks](#) can be downloaded from this link. Details are also included in the RMYS Sailing Instruction Booklet Version 6. 2018 -2020.

12 OBSTRUCTIONS

- 12.1 St. Kilda Breakwater and RMYS Mark H.

13 SHORTENING or ABANDONING RACE AFTER START

- 13.1 The race committee may shorten or abandon this race in accordance with RRS.
- 13.2 When code flag S is displayed on a RMYS Race tower or committee vessel signal mast, The finish is between the adjacent on water mark and the RMYS Race tower or committee vessel. The finish line shall be passed through in the same direction as leaving the previous rounding mark of the allocated course.

14 THE FINISH.

- 14.1 The RMYS Tower finishing line for this race will be a line between the vertical line on centre of the western face of the RMYS race tower and mark A.
- 14.2 The RMYS Race committee boat finish line is between the displayed blue flag and the adjacent on water orange mark
- 14.3 [DP] A boat no longer racing shall promptly clear the finish area and not interfere with another boat that is racing

15 PENALTY SYSTEM

- 15.1 For Classic Yachts RRS 44.1 is changed so that the Two-Turns Penalty is replaced by the One-Turn Penalty.

16 TIME LIMIT

- 16.1 The time limit for this race (race one) shall be 180 minutes after the actual start. Boats crossing the finish line after this time has expired will be scored DNF.
- 16.2 At the expiry of the time limit, the RMYS Race Officer may advise on channel 72 that the time limit for the race has expired.

17 PROTESTS AND REQUESTS FOR REDRESS

- 17.1 Protests or Requests for redress shall be notified to a RMYS Race Official within two hours of the protesting yacht's finishing time and lodged in writing on the proscribed form by 11:00 am by the following Monday.
- 17.2 Protests and request for redress will be heard at RMYS, Pier Road, St Kilda 3182 at a time set by RMYS.
- 17.3 The protest committee will consist of two members of the organising club and one member the Classic Yacht Association of Australia.

18. SCORING.

- 18.1 The scoring system is the Low Point System with modifications in accordance with the Notice of Race.
- 18.2 Series Aggregate Points will be allocated for the best corrected time performance based on each series entry starter's actual on course elapsed time after passing through the allocated course finish line for each race of this series.
- 18.3 One race score drop after seven scoring races. Two worst score drops after nine scoring races

19. SAFETY.

- 19.1 The race will start and continue at the Race Directors discretion. Upper wind limit for classic yacht racing is a sustained wind strength of 20 knots.
- 19.2 A boat that retires from the race is requested to notify the RMYS race committee as soon as possible on VHF Channel 72

20 OFFICIAL BOATS

- 20.1 Official RMYS Race Committee vessels will display the RMYS burgee.

21. RADIO COMMUNICATION.

- 21.1 The RMYS Race Committee will monitor VHF radio channel 72.
- 21.2 Skippers are required to maintain a dual listening watch on VHF Channels 72, 12 and 16 before, during and after racing.
- 21.3 Except in an emergency a boat shall neither make radio transmissions while racing nor receive radio communications not available to all boats. This restriction also applies to mobile telephones.
- 21.4 [DP] All boats, without exception, shall carry a VHF radio capable of receiving and transmitting on Channels 12, 16 and 72. .
- 21.5 If calls to the race committee on channel 72 receive no response VHF Channel 16 is to be used to establish communication and for switching over to an agreed working channel.

22 RISK STATEMENT

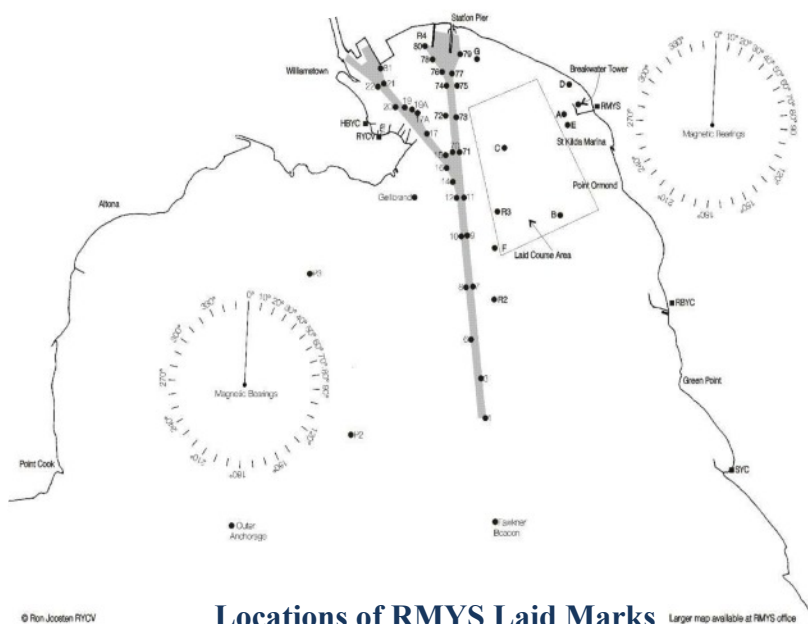
- 22.1 RRS 3 states: 'The responsibility for a boat's decision to participate in a race or to continue to race is hers alone.' By participating in this event each competitor agrees and acknowledges that sailing is a potentially dangerous activity with inherent risks. These risks include strong winds and rough seas, sudden changes in weather, failure of equipment, boat handling errors, poor seamanship by other boats, loss of balance on an unstable platform and fatigue resulting in increased risk of injury.
Inherent in the sport of sailing is the risk of permanent, catastrophic injury or death by drowning, trauma, hypothermia or other causes.

24. INSURANCE

- 24.1 Each participating boat shall be insured with valid third party liability insurance with a minimum cover of \$10,000,000 per incident or the equivalent.

25 FURTHER INFORMATION

Ann Rogers RMYS Email
boating@rmys.com.au





ROYAL MELBOURNE YACHT SQUADRON Sailing Instructions 2024-2025 v1.1



RMYS Squadron Courses

CYAA Courses

Yachts shall not pass between Mark H and the Tower.

After correctly starting, a boat shall not pass between Mark A & the Tower, unless Mark A is a mark of the course or finishing.

Rounding Red shaded marks to Port, Green Shaded marks to Starboard:

Course	Start direction	Course Description										nm	
56+laps	south	E _(s)	C _(s)	D _(s)	A _(s)	FIN						3.0x	
57+laps	north	D _(p)	C _(p)	E _(p)	A _(p)	FIN						3.0x	
58+laps	south	B _(s)	A _(s)	D _(s)	A _(s)	FIN						3.4x	
59+laps	north	D _(p)	A _(p)	B _(p)	A _(p)	FIN						3.4x	
60	north	D _(p)	C _(p)	B _(p)	A _(p)	B _(p)	FIN					6.9	
61	south	B _(s)	C _(s)	D _(s)	A _(s)	B _(s)	A _(s)	D _(s)	FIN			7.7	
62	south	B _(s)	C _(s)	D _(s)	A _(s)	B _(s)	C _(s)	D _(s)	FIN			8.3	
63	north	D _(p)	C _(p)	B _(p)	A _(p)	D _(p)	C _(p)	B _(p)	FIN			8.3	
64	north	G _(p)	C _(p)	E _(p)	A _(p)	G _(p)	A _(p)	E _(p)	FIN			7.6	
65	south	R2 _(s)	C _(s)	D _(s)	A _(s)	B _(s)	A _(s)	D _(s)	FIN			10.3	
66	north	D _(p)	C _(p)	R2 _(p)	A _(p)	D _(p)	A _(p)	B _(p)	FIN			10.3	
67	north	D _(p)	GB _(s)	P3 _(p)	R2 _(p)	FIN						10.3	
68	south	B _(s)	C _(s)	D _(s)	A _(s)	B _(s)	D _(s)	A _(s)	B _(s)	D _(s)	FIN	11.4	
69	north	D _(p)	C _(p)	B _(p)	A _(p)	D _(p)	B _(p)	A _(p)	D _(p)	B _(p)	FIN	11.4	
70	south	B _(s)	C _(s)	D _(s)	A _(s)	B _(s)	D _(s)	A _(s)	B _(s)	C _(s)	D _(s)	FIN	11.9
71	north	D _(p)	C _(p)	B _(p)	A _(p)	D _(p)	B _(p)	A _(p)	D _(p)	C _(p)	B _(p)	FIN	11.9

CYAA 2025/2026
Summer Series @
RMYS

[Top Yacht Boat sign on](#)
with PoB info for each
race

2025/2026 Summer
Series
[Entries and Results](#)

CYAA Courses



Course	Start direction	Course Description												NM
72	north	G _(p)	R2 _(p)	A _(p)	R3 _(p)	E _(p)	FIN							10.8
73	north	G _(p)	C _(p)	E _(p)	A _(p)	G _(p)	E _(p)	A _(p)	G _(p)	C _(p)	E _(p)	FIN		11.6
74	south	R3 _(s)	P3 _(s)	GB _(p)	D _(s)	A _(s)	B _(s)	C _(s)	D _(s)	FIN				13.0
75	south	R2 _(s)	D _(s)	A _(s)	R2 _(s)	D _(s)	FIN							12.8
76	south	R2 _(s)	G _(s)	A _(s)	R3 _(s)	G _(s)	FIN							12.8
77	north	G _(p)	R2 _(p)	A _(p)	G _(p)	R3 _(p)	FIN							12.8
78	north	G _(p)	GB _(s)	P3 _(p)	R2 _(p)	A _(p)	G _(p)	FIN						13.7
79	north	G _(p)	R2 _(p)	A _(p)	R2 _(p)	A _(p)	G _(p)	FIN						13.3
80	south	R2 _(s)	A _(s)	R2 _(s)	G _(s)	FIN								13.3
81	south	F _(s)	C _(s)	D _(s)	A _(s)	F _(s)	D _(s)	A _(s)	F _(s)	C _(s)	D _(s)	FIN		15.0
82	south	E _(s)	R2 _(s)	G _(s)	F _(s)	G _(s)	A _(s)	F _(s)	C _(s)	D _(s)	FIN			
85	north	G _(p)	R2 _(p)	A _(p)	G _(p)	R2 _(p)	A _(p)	G _(p)	R3 _(p)					20.6
88	south	R2 _(s)	G _(s)	A _(s)	R2 _(s)	G _(s)	A _(s)	R3 _(s)	G _(s)	FIN				20.6
89	south	R2 _(s)	OA _(s)	P3 _(s)	D _(s)	A _(s)	R2 _(s)	D _(s)	FIN					21.9
90	south	E _(s)	R3 _(s)	P3 _(p)	P2 _(p)	P3 _(p)	OA _(p)	A _(p)	G _(p)	R2 _(p)	FIN			27.4
91		D _(p)	R2 _(p)	A _(p)	D _(p)	P3 _(p)	OA _(p)	R2 _(p)	E _(p)	FIN				22.1
92		R2 _(s)	G _(s)	A _(p)	OA _(p)	P3 _(p)	P2 _(p)	P3 _(p)	R3 _(p)	E _(p)	FIN			22.1