

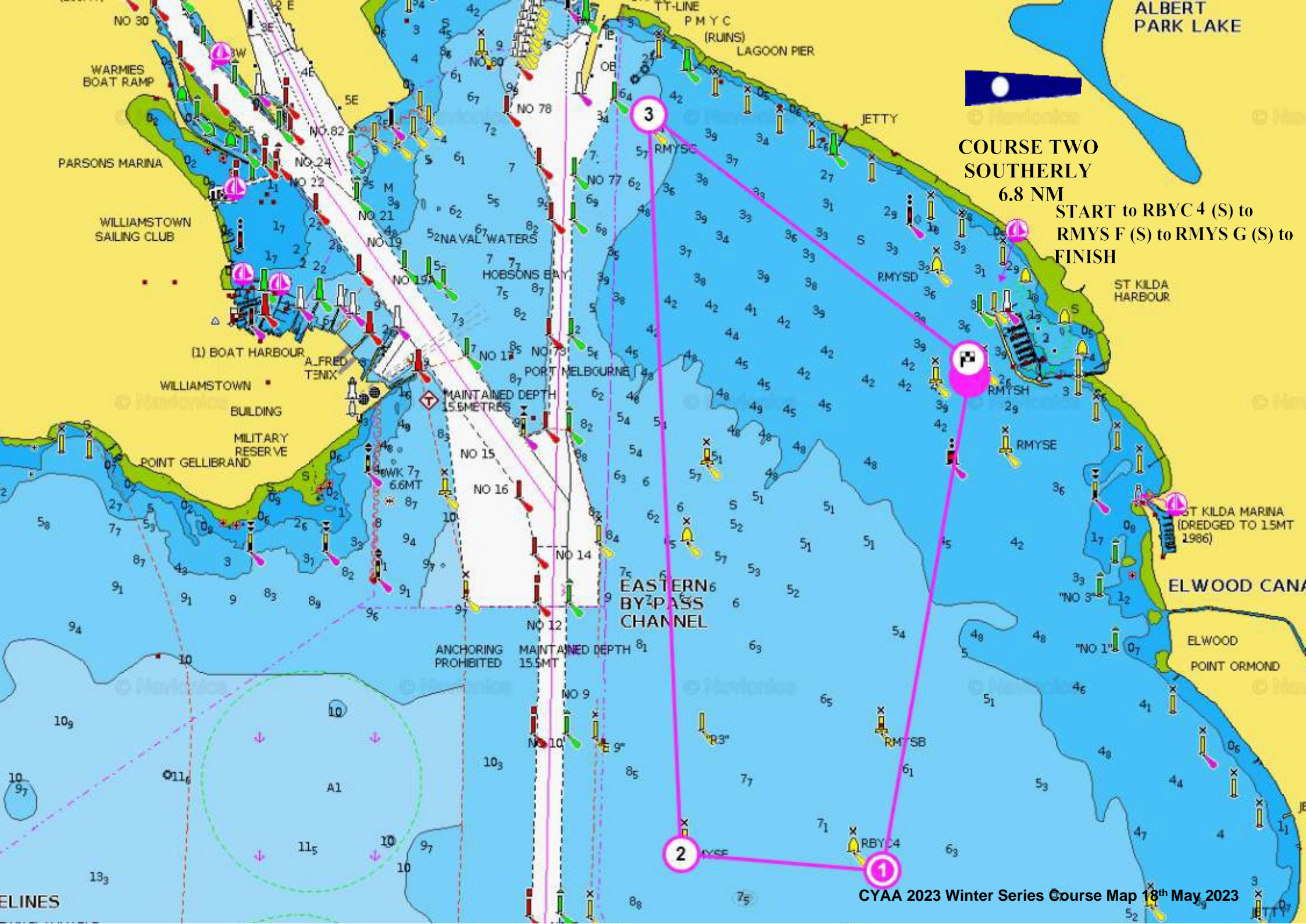
**COURSE ONE  
NORTHERLY  
6.8 NM**

**START to RMYSC G (P) to R2 (P) to  
RBYC 3 (P) to FINISH**

3

2

1



**COURSE TWO  
SOUTHERLY  
6.8 NM**

**START to RBYC 4 (S) to  
RMYS F (S) to RMYS G (S) to  
FINISH**

3

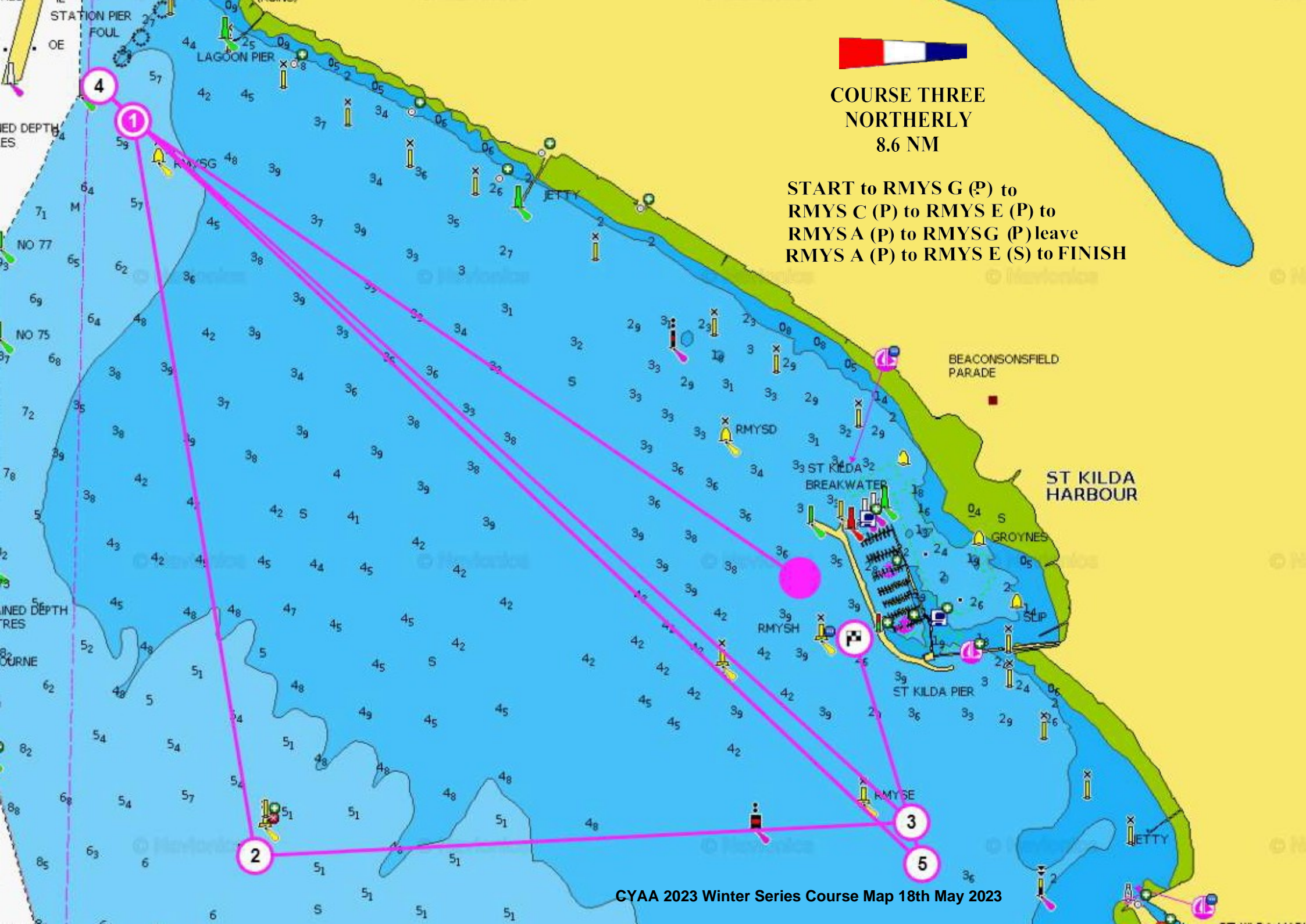
2

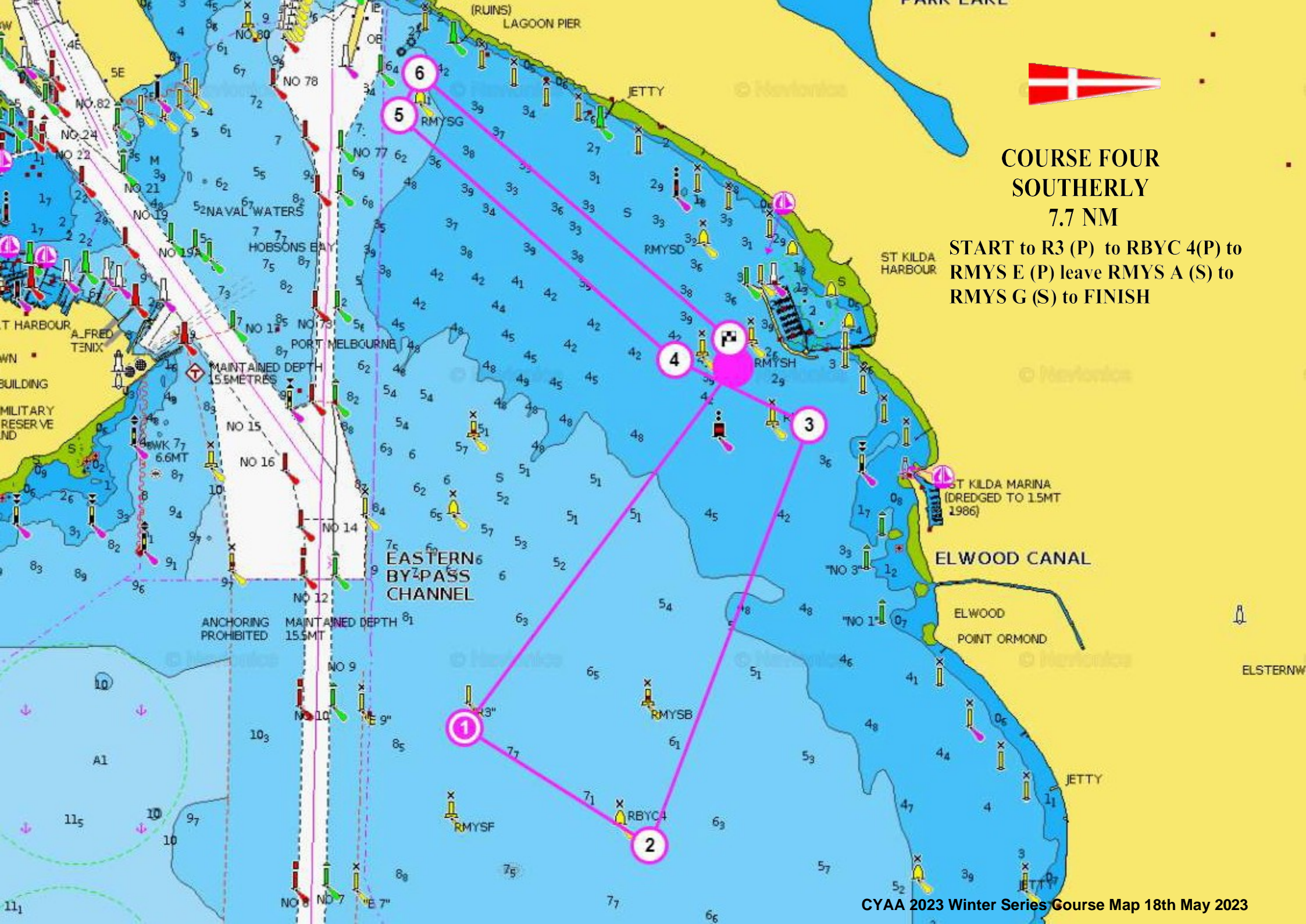
1



**COURSE THREE  
NORTHERLY  
8.6 NM**

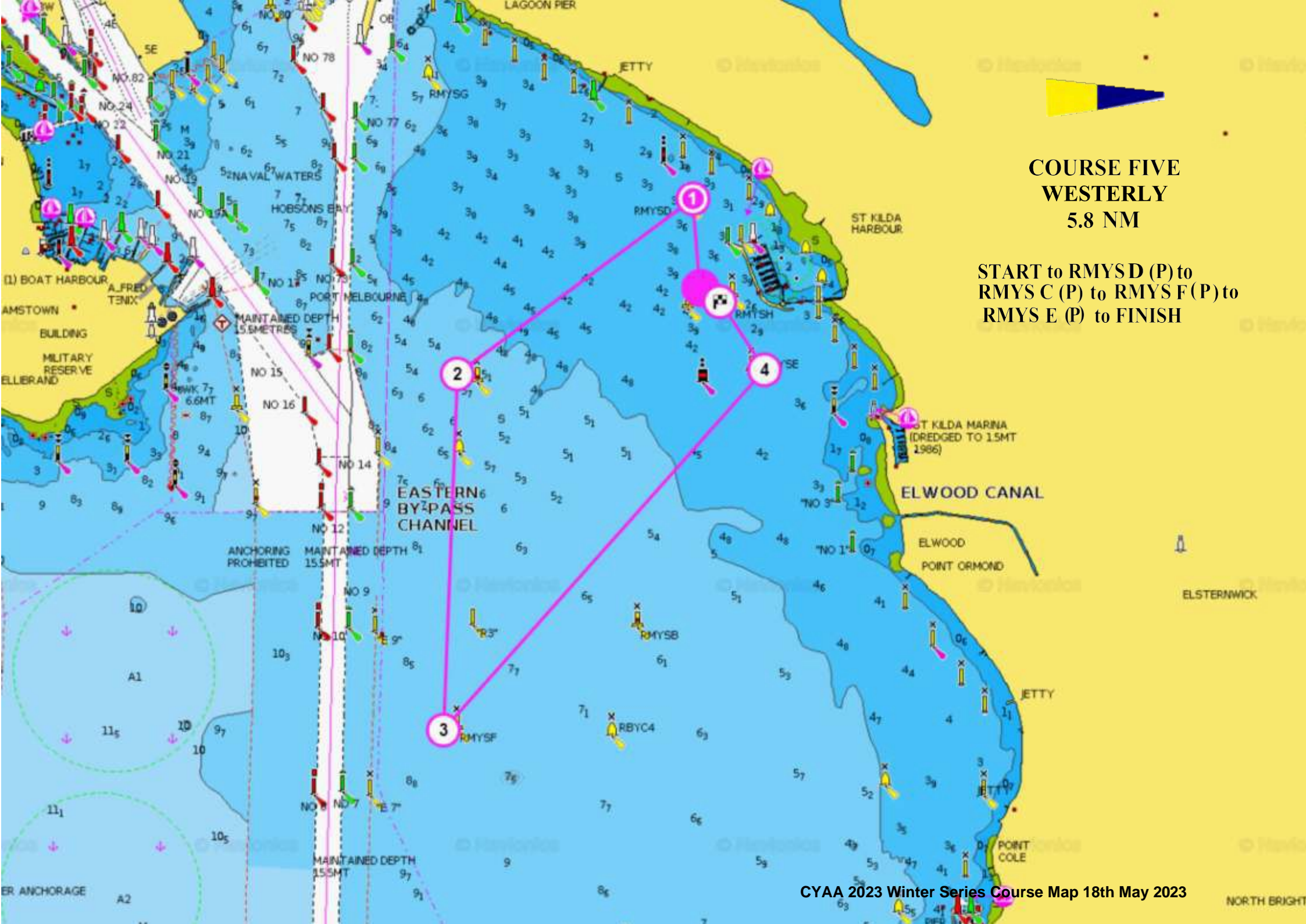
**START to RMYS G (P) to  
RMYS C (P) to RMYS E (P) to  
RMYS A (P) to RMYS G (P) leave  
RMYS A (P) to RMYS E (S) to FINISH**





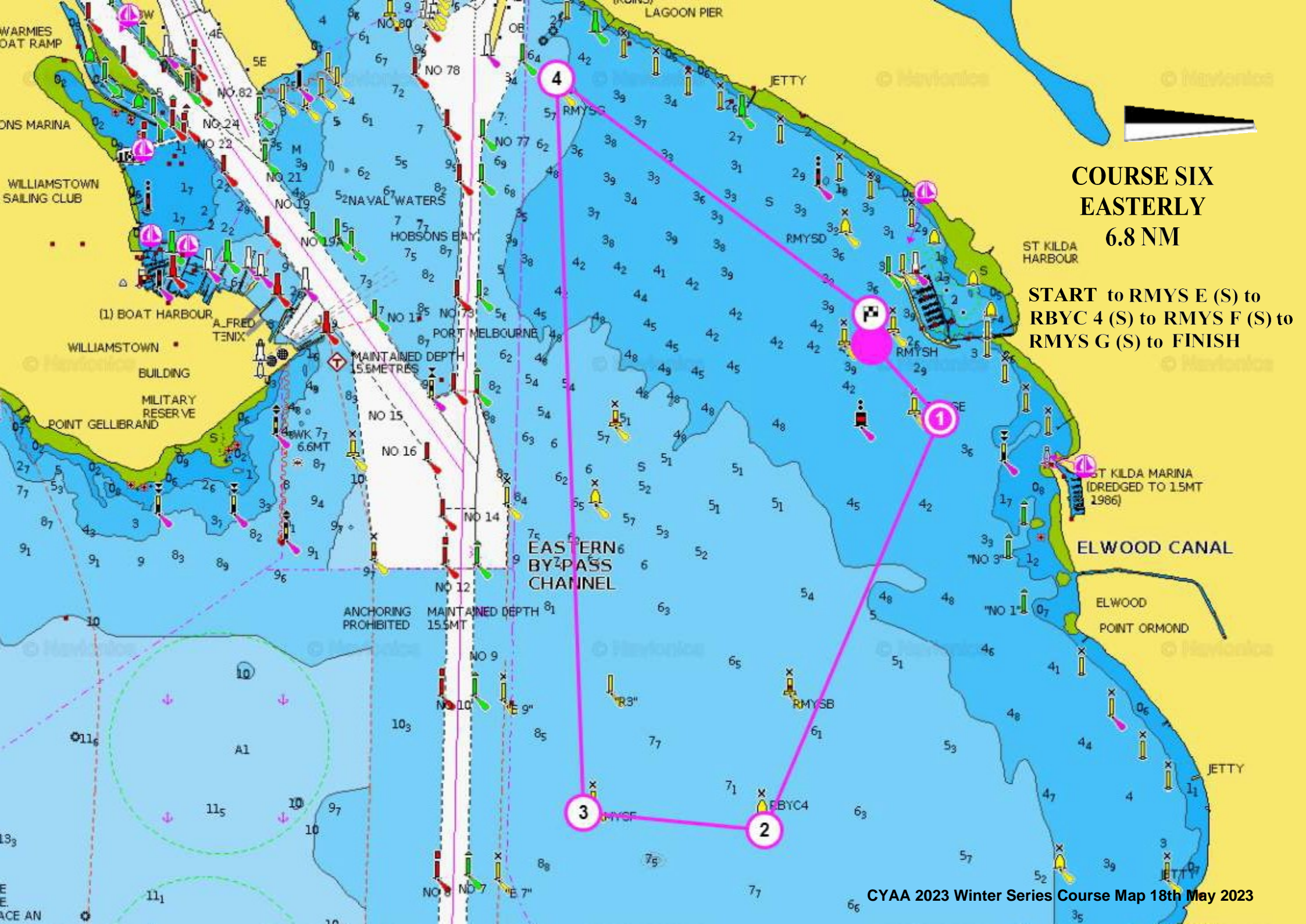
# COURSE FOUR SOUTHERLY 7.7 NM

START to R3 (P) to RBYC 4(P) to  
RMYS E (P) leave RMYS A (S) to  
RMYS G (S) to FINISH



**COURSE FIVE  
WESTERLY  
5.8 NM**

**START to RMYSD (P) to  
RMYC (P) to RMYF (P) to  
RMYE (P) to FINISH**



**COURSE SIX  
EASTERLY  
6.8 NM**

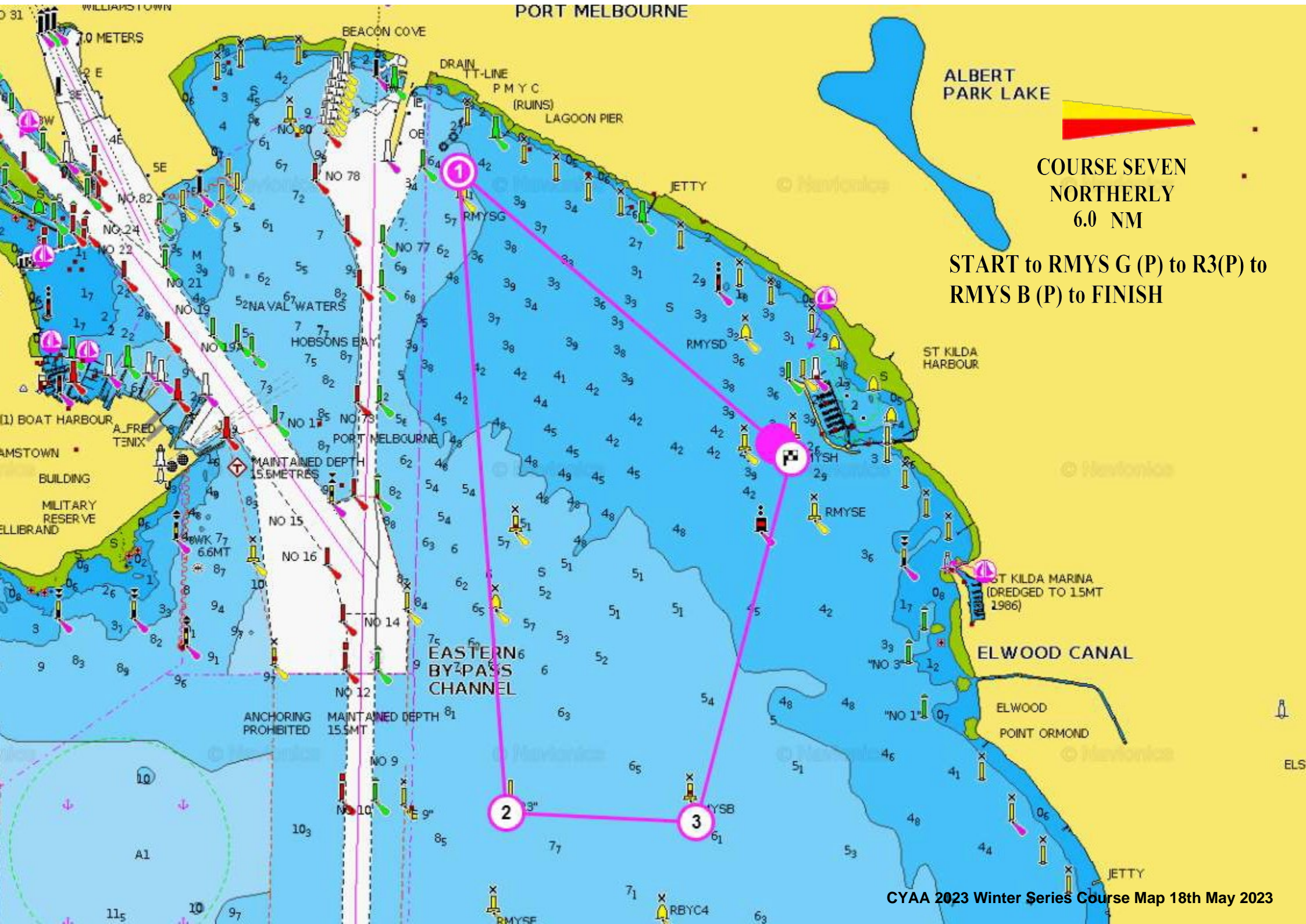
**START to RMYS E (S) to  
RBYC 4 (S) to RMYS F (S) to  
RMYS G (S) to FINISH**

4

1

3

2

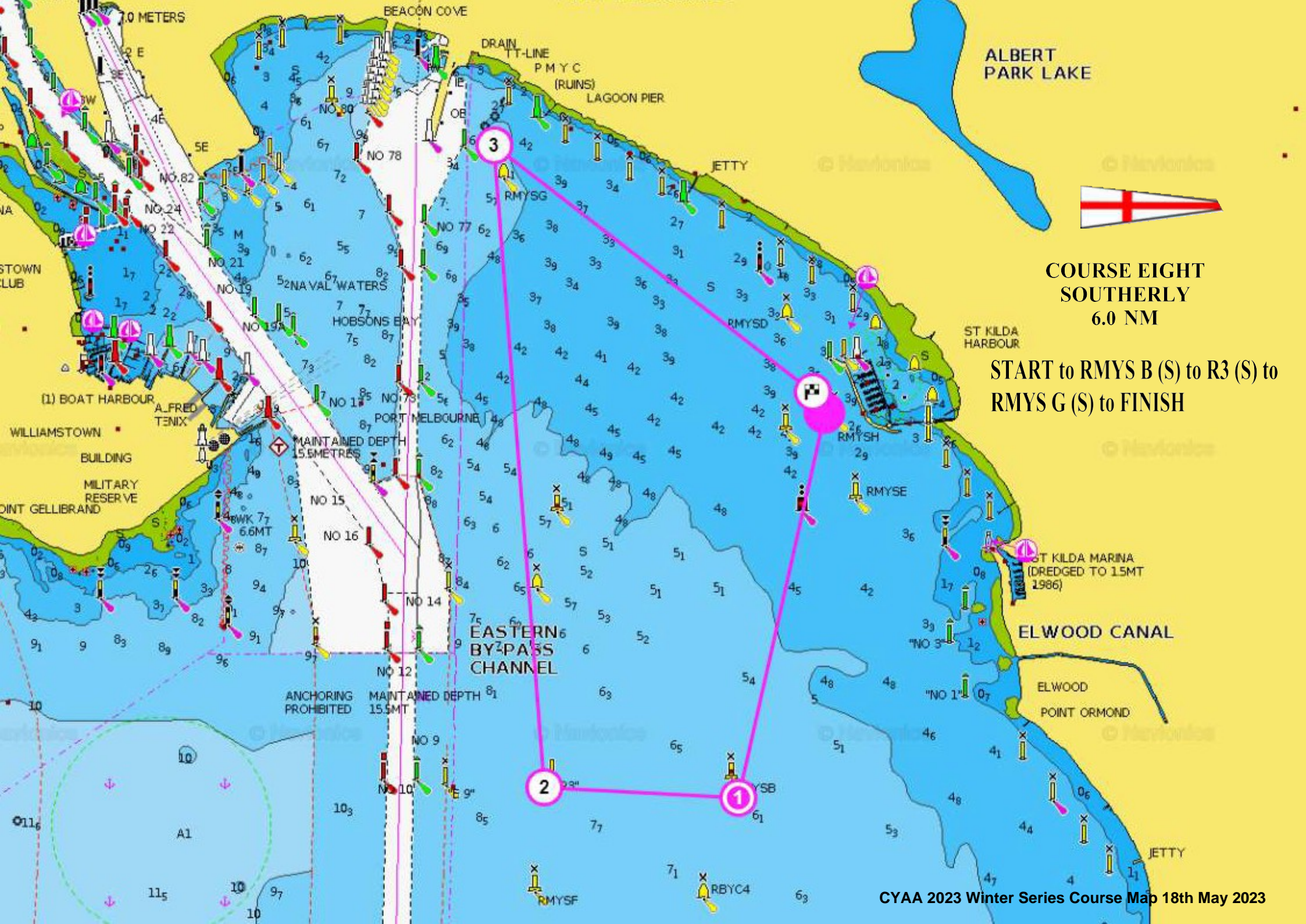


ALBERT  
PARK LAKE



**COURSE SEVEN  
NORTHERLY  
6.0 NM**

**START to RMYS G (P) to R3(P) to  
RMYS B (P) to FINISH**



ALBERT PARK LAKE



**COURSE EIGHT  
SOUTHERLY  
6.0 NM**

**START to RMYSG (S) to R3 (S) to  
RMYSH (S) to RMYSE (S) to  
RMYSB (S) to RBYC4 (S) to  
RMYSF (S) to FINISH**





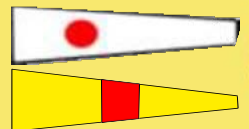
**COURSE NINE  
NORTHERLY  
PURSUIT 5.1 NM**

**START to RMYS G (P) to  
RMYS C (P) to RMYS B (P)  
to FINISH**



**COURSE TEN  
SOUTHERLY  
PURSUIT 5.5 NM**

**START to R3 (S) to  
RMYS G (S) to FINISH**



2

1

