

Classic Yacht Association O F A U S T R A L I A

www.classic-yacht.asn.au

2022 Cup Regatta 29th- 31st October 2022 Sailing Instructions and Course Descriptions



BARANNE
Skipper Pete Jerabek

Col Bandy Cup Regatta Trophy
February 2022 Cup Regatta

Classic Yacht Association O F A U S T R A L I A



THE CUP REGATTA 2022 SAILING INSTRUCTIONS



The 2022 CUP REGATTA series of scheduled races are organised by the ROYAL MELBOURNE YACHT SQUADRON



The 2022 Cup Regatta series of scheduled races will be conducted by the ROYAL YACHT CLUB of VICTORIA for the CLASSIC YACHT ASSOCIATION OF AUSTRALIA on behalf the ROYAL MELBOURNE YACHT SQUADRON.

These sailing instructions apply to the **Classic Yachts and Cota Boats** listed as competitors in the Classic Yacht Association of Australia Inc. 2022 Cup Regatta scheduled for 29th of October to 31st October 2022

Vic. Ports Corp. Melb. Aquatic Event Approval /2022

Vic. Govt. Consumer Affairs Registration A0034323W

Note: Sailing Instructions Para 15 requires:

1. All competing entrants shall register their intention to race and the number of people on board (PoB) on each day of racing.
2. All people (crew and skippers) on each competing entrant shall register their personal contact details for each day of racing.

The allocated QR code to use for compliance with Para 15 requirements are displayed in Appendix B. Pages 18 – 19 of these Sailing Instructions.

Ferdi Darley

Classic Yacht Shipwright



PORT MELBOURNE PAINT AND WALLPAPER



Issued 28th October 2022

[DP] – A rule for which the penalty is at the discretion of the jury or protest committee

1 RULES

- 1.1 Special regulations in accordance with Australian Sailing Special Regulations.
- 1.2 RRS Appendix T shall apply. ASAP Post race of the day at RYCV . (Pre Protest hearing arbitration).
- 1.3 Requirements of [the Victoria Ports Corporation Melbourne Harbour Master Directions \(VPCM\)](#) Dec 2021 Version 12.1 Para 2.14 applies. Skippers shall at all times abide by the VPCM Regulations covering the navigation of small craft and yachts and the directions of authorised Vic Ports Melb representatives.
- 1.4 Any Skipper subject of a complaint by a Ship's Master for any reason whatsoever may be disqualified.
- 1.5 AS Safety Category 6 shall apply. Yachts complying with AS Safety Category 7 yachts maybe accepted with the express permission of the Organizing Authority.
- 1.6 [DP] AS RRS Rule 46 applies to this Cup Regatta.
- 1.7 Boats shall have lodged an appropriate 2022 racing season Safety Compliance Declaration with their home club prior to the 2022 Cup Regatta.
- 1.8 [DP] Crews on yachts without lifelines must wear PFD1 – Failure to do so will result in boats being scored DSQ after protest.
- 1.9 [DP] Skippers and crew of AS Safety Category 7 yachts and yachts without lifelines must wear a PFD1. Failure to do so will result in boats being scored DSQ by the race director without a hearing.

2 CHANGES TO SAILING INSTRUCTION.

- 2.1 Any change to the sailing instructions will be posted before 0900 on the day it will take effect, except any change to the schedule of races will be posted by 2000 hours on the day before it will take effect.
- 2.2 Changes to a Sailing Instruction may be made on the water by use of VHF Channel 72.

3 COMMUNICATIONS WITH COMPETITORS

- 3.1 Notices to competitors will be posted to CYAA members via email and will be posted on the RYCV official notice boards and the [CYAA website](#).
- 3.2 The race office is located at RYCV Club House, [120 Nelson Place, Williamstown, Victoria 3016](#), phone number 9397 1277 Website [RYCV Office](#) and email rycv@rycv.asn.au
- 3.3 On the water, the RYCV race committee intends to monitor and communicate with competitors on VHF 69. RYCV Official vessel Call sign. Royals 3
- 3.4 The following communications may be made by the RYCV race committee on VHF channel. Location of race committee vessel for start of the second race on 29th and 30th October.
- 3.5 [DP] While racing, except in an emergency, a boat shall not make voice or data transmissions and shall not receive voice or data communication that is not available to all boats.

4 CODE OF CONDUCT

- 4.1 [DP] Competitors and support persons shall comply with reasonable requests from race officials.

5 SIGNALS MADE ASHORE

- 5.1 Signals made ashore will be displayed from the Royal Yacht Club of Victoria signal flagstaff.
- 5.2 When flag AP is displayed ashore, '1 minute is replaced with 'not less than 30 minutes'.

6 SCHEDULE OF RACES

6.1 Schedule of 2022 Cup Regatta Races

Saturday 29th October 2022

Race

No	Division One	Division Two	Division Three
1. Warning signal	1025 Hrs	1030 Hrs	1033 Hrs
2. Warning Signal	ASAP after Race one finish	Preceding division start signal	ASAP after Race one finish

Sunday 30th October 2022

3. Warning Signal	1025 Hrs	1030 Hrs	1035 Hrs
4. Warning signal	ASAP after Race three finish	Preceding division start signal	ASAP after Race three finish

Monday 31st October 2022

5. Warning Signal 10:30 Hrs Pursuit Start (Uira Trophy for Tumlarens)

- 6.2 One extra race per day may be sailed provided that no division becomes more than one race ahead of schedule.
- 6.3 To alert boats that a race or a sequence of races will begin soon, the starting line flag will be displayed on the RYCV race committee boat with one sound at least five minutes before a warning signal is made.

7 CLASS FLAGS

- 7.1 The division class flags are displayed below
- 7.2 All competing yachts to display the 2022 Cup Regatta flag and the CYAA Burgee.

DIVISION PENNANTS



2022 Cup Regatta Flag



CYAA Burgee

Division One	
Division Two	
Division Three	

8 RACING AREA

- 8.1 The racing area for Races 1 - 4 are the northern waters of Port Phillip .
- 8.2 Appendix A of these instructions show the location of the racing area

9 COURSES

- 9.1 The fixed mark courses for Races 1 to 4, as described in the Appendix B of these instructions. Course selection will be signalled by the display of International Numeral pennants from the Race committee vessel flagstaff when on station.

10 MARKS

- 10.1 The Start mark will be a orange inflatable mark.
- 10.2 The Start line is between a orange inflatable mark and the flag staff on the RYCV race committee vessel flying a orange flag.
- 10.3 The Finish line is between a orange inflatable mark and the RYCV race committee vessel flying a blue flag.
- 10.4 Replacement mark will be an orange inflatable inflatable cylinder mark with a black band.
- 10.5 Location of marks used for 2022 Cup Regatta courses are included in Appendix A of these instructions.

11 OBSTRUCTIONS

- 11.1 The following is designated as an obstruction:
If there is a ship approaching in a shipping channel, then that shipping channel becomes an obstruction.

12 THE START

- 12.1 The RYCV race committee vessel will start 2022 Cup Regatta races 1-4 in the vicinity of the Kerferd Road pier. Actual location is dependent on wind direction.
- 12.2 Races will be started by using RRS 26 with the warning signal made 5 minutes before each division starting signal.
- 12.3 The starting line is between the signal mast displaying a plain orange flag on the race committee vessel at the starboard end and the course side of the port-end starting mark. (An orange inflatable mark.)
- 12.4 [DP] Boats whose warning signal has not been made shall avoid the starting area during the starting sequence for other races.
- 12.5 The scheduled division one warning signal for the first race on Saturday 19th Feb will be at 1025 hrs.
- 12.6 The scheduled warning signal for all Race 3 divisions on Sunday 20th Feb will be at 1000 hrs.
- 12.7 The race three pursuit start group starting times will be published on the CYAA Web site and forwarded by email and SMS to each entrant by 0900 hrs. 20th Feb. A sound signal will be made on the RYCV Race Committee vessel when the time of each group number.
- 12.8 If any part of a boat's hull is on the course side of the starting line during the two minutes before her starting signal and she is identified, the race committee will attempt to broadcast her sail number on VHF channel 69. Any failure of, or defect in, such broadcasts will not be grounds for redress by a boat. This changes RRS 62.1(b) and 62.
- 12.9 A boat that does not start within 10 minutes after her division starting signal will be scored Did Not Start (DNS) without a hearing. This alters the RRS Scoring Appendix.

13 SHORTENING or ABANDONING RACE AFTER START

13.1 RYCV race committee may be shorten or abandon Races 1-4 in accordance with RRS.

13.2 If the RYCV race committee signals a shortened course in accordance with RRS 32 the finishing line shall be in accordance with RRS.

14 THE FINISH

14.1 The finishing line for races 1 to 4 will be the RYCV race committee vessel displaying a blue flag at the starboard end and the port end finishing mark.

14.2 [DP] If the race committee is absent when a boat finishes, she shall report her finishing time, and her position in relation to nearby boats, to the race committee at the first reasonable opportunity

14.3 [DP] A boat no longer racing shall promptly clear the finish area and not interfere with another boat that is racing.

15 SIGNING ON

15.1 All boats shall report their intention to start the race using the QR Code displayed in Appendix A

15.2 Boats not indicating their intention to start by 1025 hrs. to start will be deemed not starting.

15.3 A boat that retires from any of the races 1 - 4 shall notify the RYCV race committee at the first reasonable opportunity by VHF Channel 72.

15.4 All crew of each boat shall use the allocated QR code for races 1 - 4 to register their personal contact details before their boat departs from its home club.

16 PENALTY SYSTEM

16.1 For all boats competing in the 2022 Cup Regatta, Rule 44.1 is changed so that the Two Turns penalty is replaced by the One-Turn penalty. This alters RRS 44.1.

17 TIME LIMITS

17.1 The duration limit for races 1 to 4 will be 160 minutes from the actual race start time of each race. All boats crossing the finish line after this time will be scored DNF. This changes RRS 35 A4 and 5.

17.2 Time limit for race 5 is 120 minutes from the actual race start time of each race. All boats crossing the finish line after this time will be scored DNF. This changes RRS 35 A4 and 5.

18 HEARING REQUESTS

18.1 The protest time limit is 60 minutes after the last boat finishes the last race of the day

18.2 Hearing request forms are available from the race office at RYCV.

18.3 A protest or redress hearing shall be scheduled as soon as practical.

18.4 A request for reopening a hearing shall be delivered, no later than 30 minutes, after the party requesting re-opening was informed of the decision on the day.

18.5 A protest re-opening shall be heard as soon as practicable. This changes Rule 66.2 (a)

19 SCORING

19.1 Two races are required to be completed to constitute a series.

19.2 A boat's series score is the total of her race scores.

19.3 When fewer than four races have been completed, a boat's series score is the total of her race scores.

19.4 Tony Blake trophy scoring will be the overall series aggregate from all races that each Cup Regatta entry competed in and double their 2022 Cup Regatta races 1-4 score.

20 SAFETY REGULATIONS

- 20.1 Each race will start at the discretion of the RYCV Race Officer.
- 20.2 The crew of boats that do not conform to SA Special Regulations Part 1 Section 3.12 (category 6 races included) shall wear Personal Flotation Devices, (PFD)'s at all times whilst racing. PFD's shall conform to Australian Sailing Special Regulations 5.01.1.
- 20.3 RYCV recommends that all competitors wear an approved personal floatation device (PFD) whilst racing.
- 20.4 A boat that retires from a race is requested to notify the race committee as soon as possible by calling the RYCV race committee on VHF 69 and state if assistance is or is not required.
- 20.5 If no response from either race committee is received on either channel 69 channel 16 can be used as a call up channel before switching to a working channel.

21 OFFICIAL VESSELS

- 21.1 The RYCV Race Committee Vessels shall carry the pennant of their respective yacht clubs.
- 21.2 Official Vessels of the RYCV other than the RYCV Race Committee vessels shall carry the pennant of their respective yacht clubs.

22 RADIO COMMUNICATIONS

- 22.1 The RYCV Race Committee Vessel will monitor VHF Channel 72
- 22.2 Except in an emergency, a boat shall neither make radio transmissions while racing nor receive radio communications not available to other boats. This restriction also applies to mobile phones.
- 22.3 All boats without exception shall carry a VHF radio capable of receiving and transmitting on Channels 12,16 and 72. Failure to do so may result in a boat being scored DSQ after a hearing.

23 PRIZES

- 23.1 2022 Cup Regatta trophies will be presented at the Cup Regatta Presentation BBQ on Monday at RYCV

24 RISK STATEMENT

- 24.1 RRS 3 states: 'The responsibility for a boat's decision to participate in a race or to continue to race is hers alone.' By participating in this event each competitor agrees and acknowledges that sailing is a potentially dangerous activity with inherent risks. These risks include strong winds and rough seas, sudden changes in weather, failure of equipment, boat handling errors, poor seamanship by other boats, loss of balance on an unstable platform and fatigue resulting in increased risk of injury. **Inherent in the sport of sailing is the risk of permanent, catastrophic injury or death by drowning, trauma, hypothermia or other causes.**

25 INSURANCE

- 25.1 Each participating boat shall be insured with valid third party insurance with a minimum cover of AUS\$10M per incident or the equivalent.

Peter Costoloe
CYAA Race Director

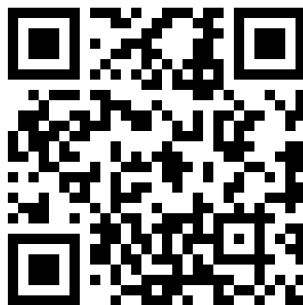
2022 Cup Regatta Sailing Instructions

APPENDIX A

QR code for 2022 Cup Regatta
Boat competing and People on Board sign on



[2022 Cup Regatta
Entry link](#)



CYAA 2022 Cup
Regatta @ RYCV
[Top Yacht Boat sign on](#)
with PoB info for each
race



[2022 Cup Regatta
Entries and Results](#)

VICSAIL

MELBOURNE & GEELONG

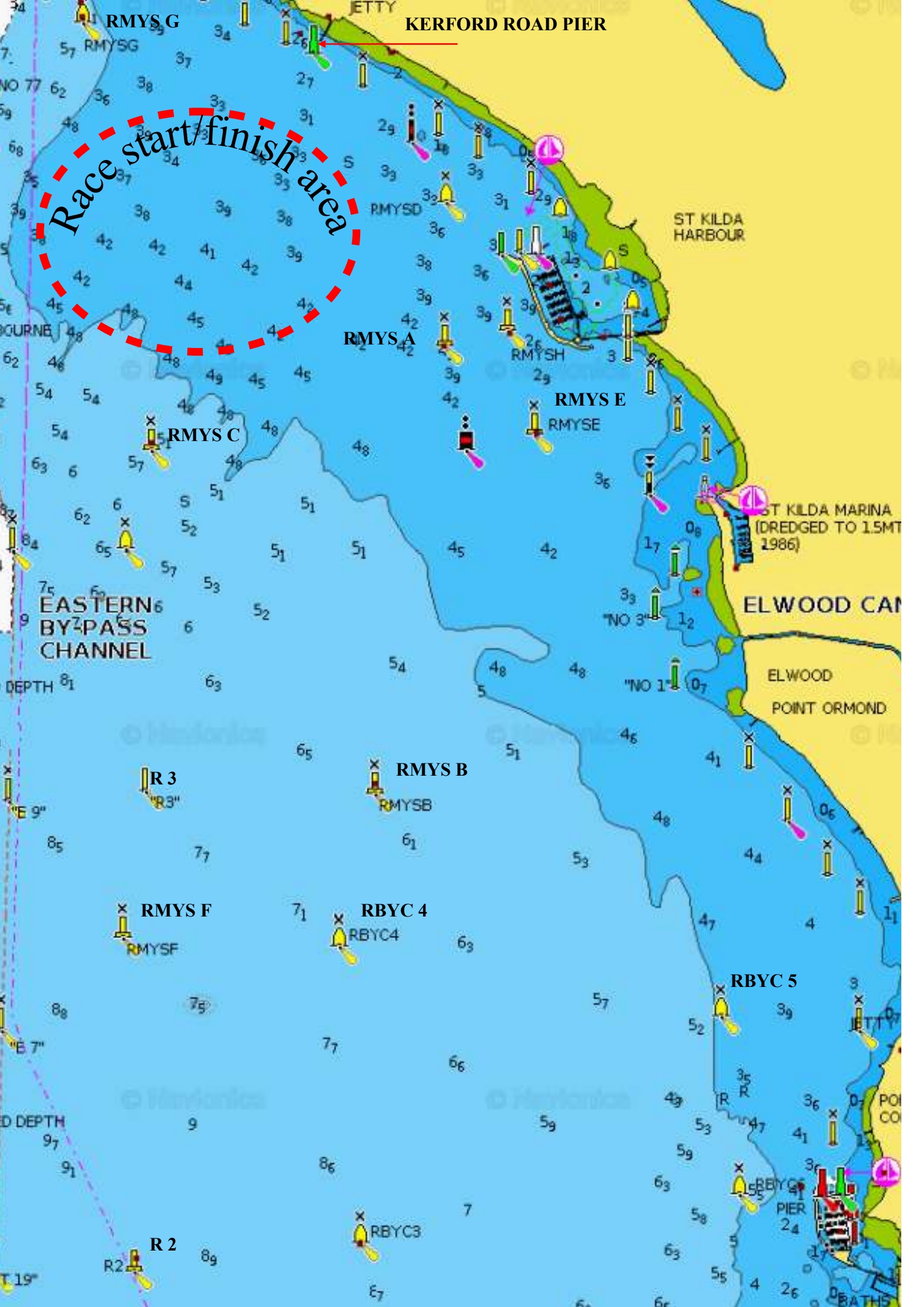


2022 Cup Regatta Sailing Instructions
Appendix B
Course descriptions and mark locations



Ferdi Darley
Classic Yacht Shipwright

PORT MELBOURNE PAINT AND WALLPAPER



KERFORD ROAD PIER

Race start/finish area

ST KILDA HARBOUR

RMYS A

RMYS E

RMYS C

RMYS E

ST KILDA MARINA
(DREDGED TO 1.5MT
1986)

EASTERN
BYPASS
CHANNEL

ELWOOD CANAL

ELWOOD
POINT ORMOND

RMYS B

RMYS F

RBYC 4

RBYC 5

R 2

RBYC 3

POINT ORMOND

BATHING



DIVISION ONE

COURSE DESCRIPTIONS

Race starting and finishing area in vicinity of Kerford Road Pier and RMYS C Mark waters



COURSE ONE
NORTHERLY
9.1 NM

START to RMYS G (P) to R2 (P) to RBYC 5 (P) to FINISH



COURSE TWO
SOUTHERLY
9.2 NM

START leave RMYS A (P) to RBYC 5 (S) to R2 (S) to RMYS G (S) to FINISH



COURSE THREE
NORTHERLY
8.4 NM

START to RMYS G (S) leave RMYS A (P) to RMYS E (S) to R2 (S) to RMYS C (S) to FINISH



COURSE FOUR
SOUTHERLY
8.5 NM

START to R3 (P) to R2 (P) to RMYS B (P) to RMYS E (P) leave RMYS A (S) to RMYS G (P) to FINISH



COURSE FIVE
WESTERLY
7.2 NM

START to RMYS C (P) to R2 (P) RBYC 5 (P) to RMYS E (P) leave RMYS (S) to FINISH



COURSE SIX
EASTERLY
9.1 NM

START leave RMYS A (P) to RMYS E (S) to RBYC 5 (S) to R2 (S) RMYS G (S) to FINISH



COURSE SEVEN
NORTHERLY
6.2 NM

START to RMYS G (P) to R3 (P) to RMYS F (P) to RMYS B (P) to FINISH



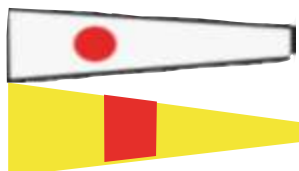
COURSE EIGHT
SOUTHERLY
6.2 NM

START to RMYS B (S) to RMYS F(S) to RMYS G (S) to FINISH



COURSE NINE
NORTHERLY
PURSUIT 5.1 NM

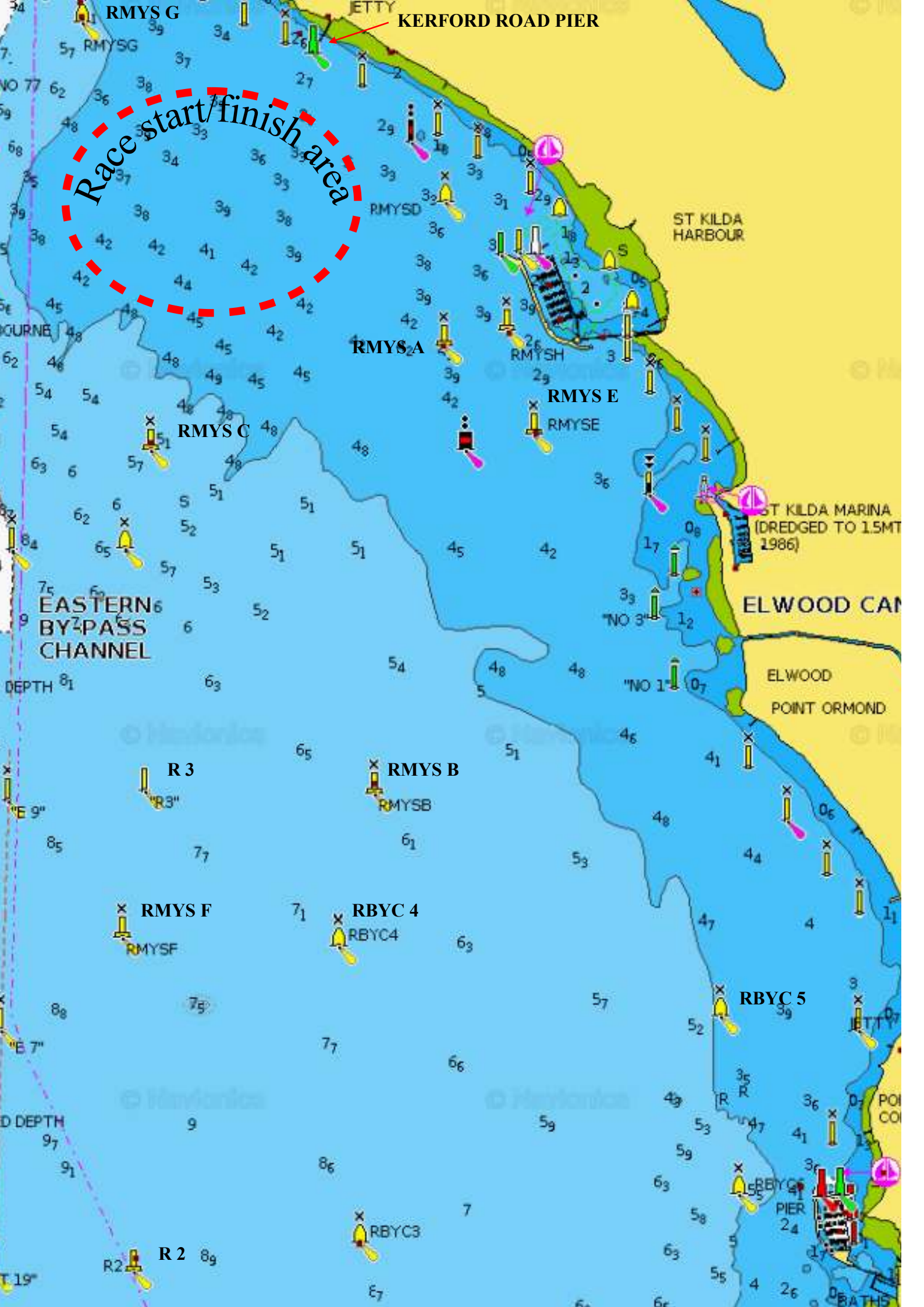
START to RMYS G (P) to RMYS C (P) to RMYS B (P) to FINISH



COURSE TEN
SOUTHERLY
PURSUIT 5.0 N

START to R3 (S) to RMYS G (P) to FINISH





KERFORD ROAD PIER

Race start/finish area

ST KILDA HARBOUR

RMYS_A

RMYS_E

RMYS_C

RMYS_E

ST KILDA MARINA
(DREDGED TO 1.5MT
1986)

EASTERN
BY-PASS
CHANNEL

ELWOOD CANAL

ELWOOD
POINT ORMOND

R 3

RMYS_B

RMYS_F

RBYC 4

RBYC 5

R 2

RBYC 3

DIVISION TWO

COURSE DESCRIPTIONS

Race starting and finishing area in vicinity of Kerford Road Pier and RMYS C Mark waters



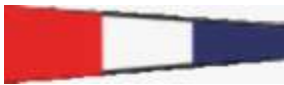
**COURSE ONE
NORTHERLY
7.4 NM**

**START to RMYS G (P) to R2 (P) to RBYC 5 (P) to
FINISH**



**COURSE TWO
SOUTHERLY
7.8 NM**

**START leave RMYS A (P) to RBYC 5 (S) to RMYS F (S)
to RMYS G (S) to FINISH**



**COURSE THREE
NORTHERLY
6.5 NM**

**START to RMYS G (S) leave RMYS A (P) to RMYS E
(S) to RMYS F (S) to RMYS C (S) to FINISH**



**COURSE FOUR
SOUTHERLY
6.7 NM**

**START to R3 (P) to RBYC 4(P) to RMYS E (P) leave
RMYS A (S) to RMYS G (P) to FINISH**



**COURSE FIVE
WESTERLY
6.7 NM**

**START to RMYS C (P) to R3 (P) to RMYS F (P) RBYC 5
(P) to RMYS E (P) leave RMYS A (S) to FINISH**



**COURSE SIX
EASTERLY
6.8 NM**

**START leave RMYS A (P) to RMYS E (S) to RBYC 4 (S)
to RMYS F (S) RMYS G (S) to FINISH**



**COURSE SEVEN
NORTHERLY
5.4 NM**

**START to RMYS G (P) to R3(P) to RMYS B (P) to
FINISH**



**COURSE EIGHT
SOUTHERLY
5.5 NM**

**START to RMYS B (S) to R3 (S) to RMYS G (S) to
FINISH**



**COURSE NINE
NORTHERLY
PURSUIT 5.1 NM**

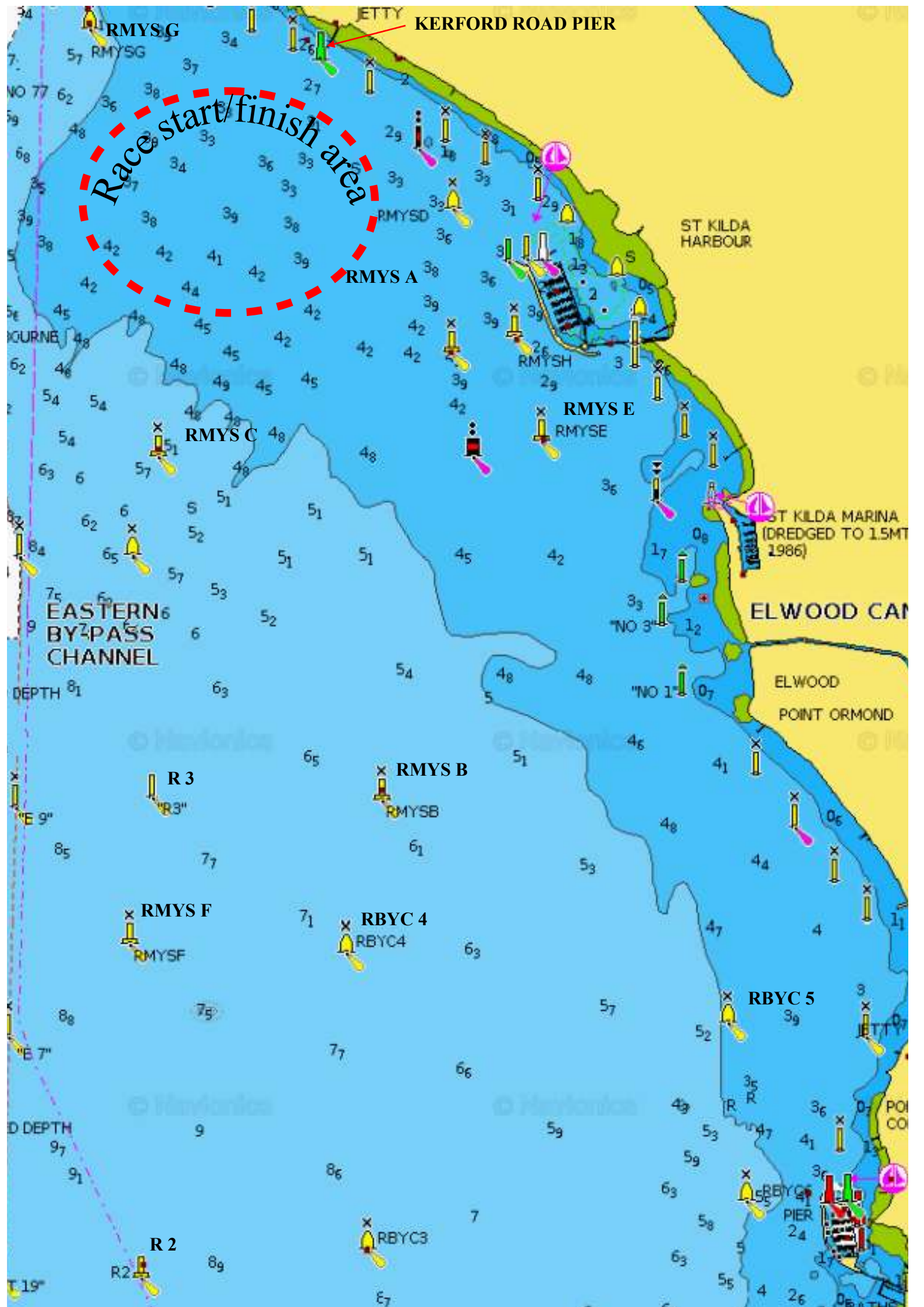
**START to RMYS G (P) to RMYS C (P) to RMYS B (P)
to FINISH**



**COURSE TEN
SOUTHERLY
PURSUIT 5.0 NM**

START to R3 (S) to RMYS G (S) to FINISH





RMYSG

KERFORD ROAD PIER

Race start/finish area

ST KILDA HARBOUR

RMYSD

RMYSH

RMYSE

RMYSC

ST KILDA MARINA (DREDGED TO 15MT 1986)

EASTERN BYPASS CHANNEL

ELWOOD CANAL

ELWOOD POINT ORMOND

R 3

RMYSB

RMYSF

RBYC 4

RBYC 5

R 2

RBYC 3

PIER



DIVISION THREE

COURSE DESCRIPTIONS

Race starting and finishing area in vicinity of Kerford Road Pier and RMYS C Mark waters



**COURSE ONE
NORTHERLY
6.4 NM**

START to RMYS G (P) to RMYS F(P) to RBYC 4(P) to FINISH



**COURSE TWO
SOUTHERLY
6.2 NM**

START leave RMYS A (P) to RBYC 4 (S) to RMYS F (S) to RMYS G (S) to FINISH



**COURSE THREE
NORTHERLY
5.7 NM**

START to RMYS G (S) leave RMYS A (P) to RMYS E (S) to RMYS F (S) to RMYS C (S) to FINISH



**COURSE FOUR
SOUTHERLY
6.1 NM**

START to R3 (P) to RMYS B (P) to RMYS E (P) leave RMYS A (S) to RMYS G (P) to FINISH



**COURSE FIVE
WESTERLY
6.3 NM**

START to RMYS C (P) to RMYS F (P) RBYC 5 (P) to RMYS E (P) leave RMYS (S) to FINISH



**COURSE SIX
EASTERLY
6.4 NM**

START leave RMYS A (P) to RMYS E (S) to RMYS F (S) RMYS G (S) to FINISH



**COURSE SEVEN
NORTHERLY
5.0 NM**

START to RMYS G (P) to RMYS C (P) to RMYS B (P) to FINISH



**COURSE EIGHT
SOUTHERLY
5.1 NM**

START to RMYS B (S) to RMYS C (S) to RMYS G (S) to FINISH



**COURSE NINE
NORTHERLY
PURSUIT 5.1 NM**

START to RMYS G (P) to RMYS C (P) to RMYS B (P) to FINISH



**COURSE TEN
SOUTHERLY
PURSUIT 5.0**

START to R3 (S) to RMYS G (S) to FINISH





DIVISION ONE

COURSE ONE NORTHERLY 9.1 NM	START to RMYS G (P) to R2 (P) to RBYC 5 (P) to FINISH
COURSE TWO SOUTHERLY 9.2 NM	START leave RMYS A (P) to RBYC 5 (S) to R2 (S) to RMYS G (S) to FINISH
COURSE THREE NORTHERLY 8.4 NM	START to RMYS G (S) leave RMYS A (P) to RMYS E (S) to R2 (S) to RMYS C (S) to FINISH
COURSE FOUR SOUTHERLY 8.5 NM	START to R3 (P) to R2 (P) to RMYS B (P) to RMYS E (P) leave RMYS A (S) to RMYS G (P) to FINISH
COURSE FIVE WESTERLY 7.2 NM	START to RMYS C (P) to R2 (P) RBYC 5 (P) to RMYS E (P) leave RMYS (S) to FINISH
COURSE SIX EASTERLY 9.1 NM	START leave RMYS A (P) to RMYS E (S) to RBYC 5 (S) to R2 (S) RMYS G (S) to FINISH
COURSE SEVEN NORTHERLY 6.2 NM	START to RMYS G (P) to R3 (P) to RMYS F (P) to RMYS B (P) to FINISH
COURSE EIGHT SOUTHERLY 6.2 NM	START to RMYS B (S) to RMYS F(S) to RMYS G (S) to FINISH
COURSE NINE NORTHERLY PURSUIT 5.1 NM	START to RMYS G (P) to RMYS C (P) to RMYS B (P) to FINISH
COURSE TEN SOUTHERLY PURSUIT 5.0 NM	START to R3 (S) to RMYS G (P) to FINISH

DIVISIO

COURSE ONE NORTHERLY 7.4 NM	START t RBYC 5
COURSE TWO SOUTHERLY 7.8 NM	START I RBYC 5 RMYS G
COURSE THREE NORTHERLY 6.5 NM	START t RMYS A RMYS F FINISH
COURSE FOUR SOUTHERLY 6.7 NM	START t RMYS E RMYS G
COURSE FIVE WESTERLY 6.7 NM	START t RMYS F E (P) lea
COURSE SIX EASTERLY 6.8 NM	START I RMYS E RMYS F FINISH
COURSE SEVEN NORTHERLY 5.4 NM	START t RMYS B
COURSE EIGHT SOUTHERLY 5.5 NM	START t RMYS G
COURSE NINE NORTHERLY PURSUIT 5.1 NM	START t C (P) to F
COURSE TEN SOUTHERLY PURSUIT 5.0 NM	START t FINISH

REGATTA 2022 DESCRIPTIONS



DIVISION TWO

to RMYS G (P) to R2 (P) to (P) to FINISH

leave RMYS A (P) to (S) to RMYS F (S) to (S) to FINISH

to RMYS G (S) leave (P) to RMYS E (S) to (S) to RMYS C (S) to

to R3 (P) to RBYC 4(P) to (P) leave RMYS A (S) to (P) to FINISH

to RMYS C (P) to R3 (P) to (P) RBYC 5 (P) to RMYS ve RMYS A (S) to FINISH

leave RMYS A (P) to (S) to RBYC 4 (S) to (S) RMYS G (S) to

to RMYS G (P) to R3(P) to (P) to FINISH

to RMYS B (S) to R3 (S) to (S) to FINISH

to RMYS G (P) to RMYS RMYS B (P) to FINISH

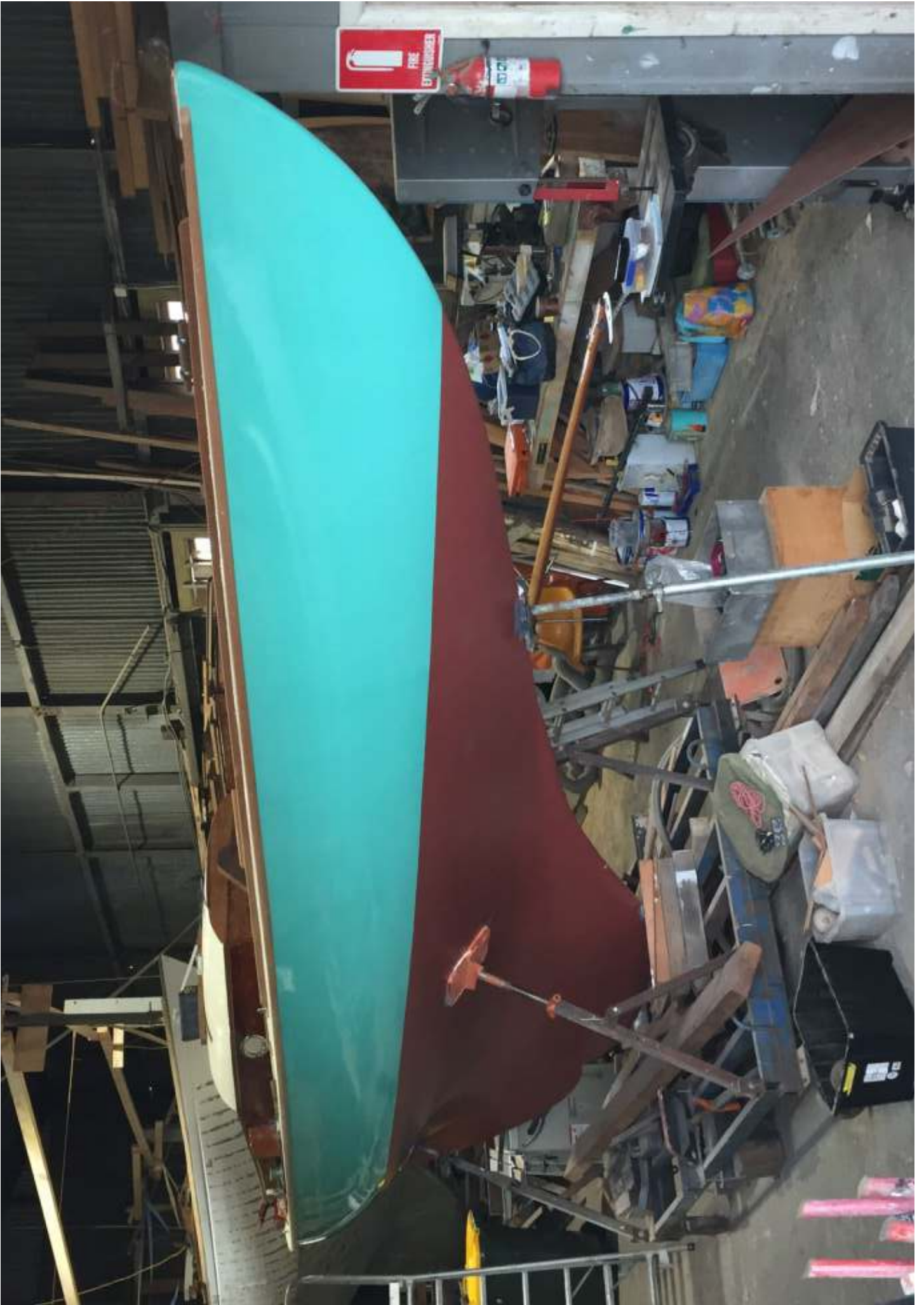
to R3 (S) to RMYS G (S) to

DIVISION THREE

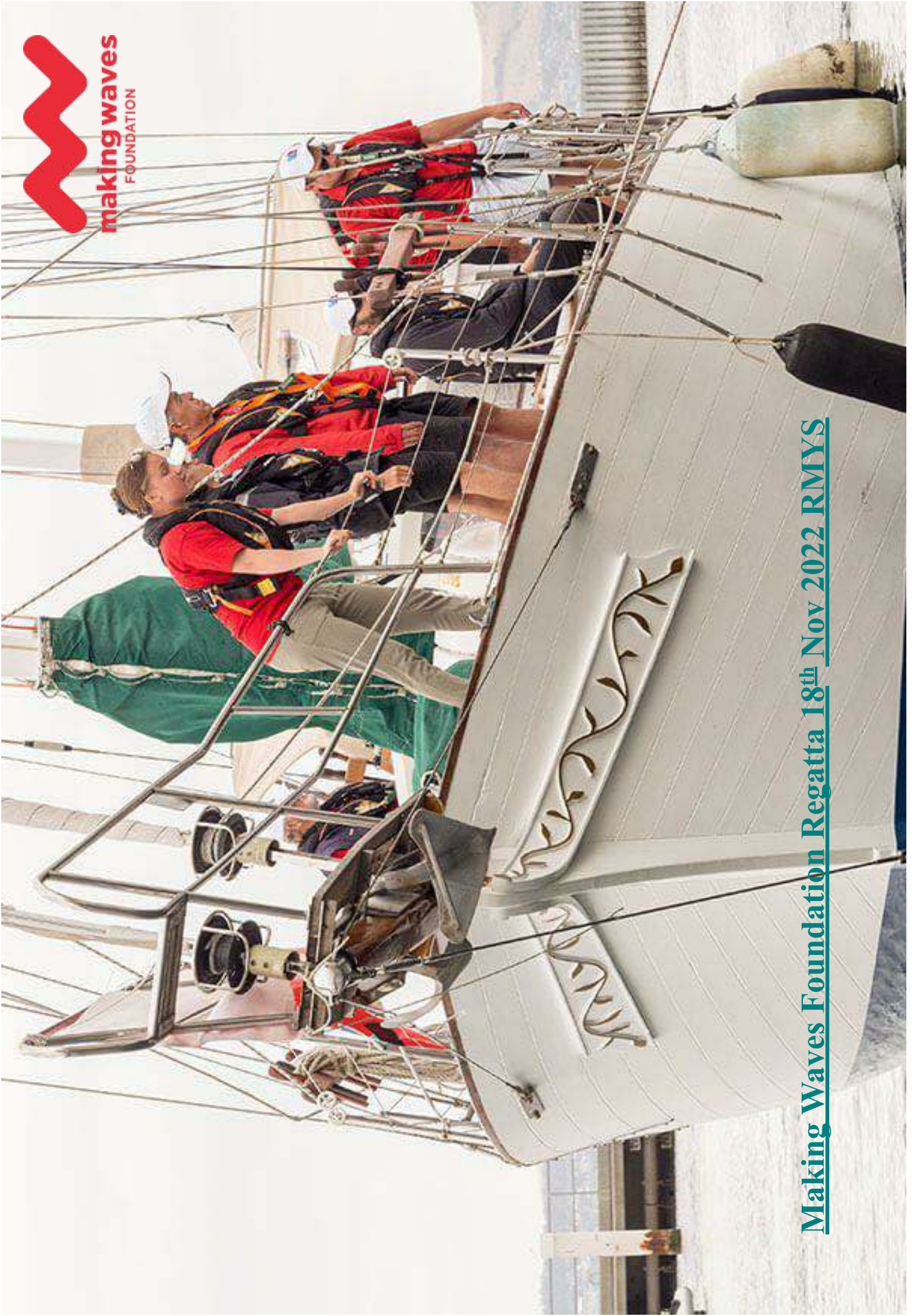
COURSE ONE NORTHERLY 6.4 NM	START to RMYS G (P) to RMYS F(P) to RBYC 4(P) to FINISH
COURSE TWO SOUTHERLY 6.2 NM	START leave RMYS A (P) to RBYC 4 (S) to RMYS F (S) to RMYS G (S) to FINISH
COURSE THREE NORTHERLY 5.7 NM	START to RMYS G (S) leave RMYS A (P) to RMYS E (S) to RMYS F (S) to RMYS C (S) to FINISH
COURSE FOUR SOUTHERLY 6.1 NM	START to R3 (P) to RMYS B (P) to RMYS E (P) leave RMYS A (S) to RMYS G (P) to FINISH
COURSE FIVE WESTERLY 6.3 NM	START to RMYS C (P) to RMYS F (P) RBYC 5 (P) to RMYS E (P) leave RMYS A (S) to FINISH
COURSE SIX EASTERLY 6.4 NM	START leave RMYS A (P) to RMYS E (S) to RMYS F (S) RMYS G (S) to FINISH
COURSE SEVEN NORTHERLY 5.0 NM	START to RMYS G (P) to RMYS C (P) to RMYS B (P) to FINISH
COURSE EIGHT SOUTHERLY 5.1 NM	START to RMYS B (S) to RMYS C (S) to RMYS G (S) to FINISH
COURSE NINE NORTHERLY PURSUIT 5.1 NM	START to RMYS G (P) to RMYS C (P) to RMYS B (P) to FINISH
COURSE TEN SOUTHERLY PURSUIT 5.0 NM	START to R3 (S) to RMYS G (S) to FINISH



The Tumlare Yvonne is all set for the October 2022 Cup Regatta



The Tumlaren Yvonne ready for the 2022 Cup Regatta waters



making waves
FOUNDATION

Making Waves Foundation Regatta 18th Nov 2022 RMYS