



**Victoria Govt has issued 4<sup>th</sup> Nov reviewed advice for community sport. Participation.**



Non Vic Govt. QR Code to send Boat racing name and Pob to RMYS Race committee

**SAILING INSTRUCTIONS  
CLASSIC YACHT ASSOCIATION of AUSTRALIA  
2021/2022 SUMMER SERIES  
RACE TWO 28th November 2021**

**Ammendment No 1. Raced 2 start time rescheduled to 10:45am**

**Race One will be conducted by the ROYAL MELBOURNE YACHT SQUADRON on behalf of the Classic Yacht Association of Australia Inc. A0034323W**

**Vic Ports Corp. Melb. Aquatic Event Approval 44-2021  
SI's Revision V1.0 Issued 16<sup>th</sup> Nov 2021**

**1 RULES.**

The CYAA 2021/20212 Summer Series of races will be governed by:

- 1.1 The Australian Sailing Racing Rules of Sailing (RRS 2021-2024).
- 1.2 The Special Regulations and Prescriptions of Australia Sailing Part 1 For Racing Boats apply.
- 1.3 The [requirements of the Port of Melbourne Corporation](#) (PoMC).
- 1.4 The Marine Safety Act 2010 (Vic) and the Marine Safety Regulations 2012 (Vic).
- 1.5 Any Skipper subject of a complaint by a Ship's Master for any reason whatsoever may be disqualified.
- 1.6 AS Safety Category 6 shall apply. AS Safety Category 7 yachts may be accepted with the express permission of the Organizing Authority.
- 1.7 Boats shall lodge an appropriate Safety Compliance Declaration with their home club for years 2021/2022
- 1.8 Crews on yachts without lifelines must wear PFD1 – Failure to do so will result in boats being scored DSQ
- 1.9 [DP] Crew Declarations **MANDATORY** for all participating boats to register their Crew on board and their contact emergency contacts declarations via the TopYacht Entry System 15 mnutes prior to race warning signal via the following link - <http://tymob.net.au/1414>
- 1.10 RRS Rule 44.1 is changed. The two turns penalty is replaced by the one turn penalty

**2 NOTICES TO COMPETITOR.**

- 2.1 Notices to competitors will be posted to CYAA members via email and will be posted on the [CYAA website](#).

**3. CHANGES TO SAILING INSTRUCTIONS**

- 3.1 Any change to the Sailing Instructions will be posted before 09:00 on the day it will take effect, except that any change to the schedule of races will be posted by 20:00 on the day before it will take effect.
- 3.2 Changes to these Sailing Instructions will be available at [CYAA website](#).

**4 CODE OF CONDUCT**

- 4.1 [DP] Competitors and support persons shall comply with reasonable requests from race officials.

**5 SIGNALS MADE ASHORE**

- 5.1 Signals made ashore will be made on the RMYS signal mast

**6. RACING AREA**

- 6.1 Racing area will be in the northern waters of Port Phillip.

## 7. SIGNING ON

- 7.1 [DP] All boats shall report their intention to start the race.
- 7.2 Boats must use the allocated non Vic Govt. QR Code for this race to send an SMS indicating their intention to start and the number of Persons on Board. (POB).
- 7.3 Boats not indicating their intention to start by 1015 hrs. to start will be deemed not starting.
- 7.4 A boat that retires from this race shall notify the RMYS race committee at the first reasonable opportunity by VHF Channel 72.

## 8 THE START.

- 8.1 [RMYS Tower Starting procedure for combined divisions using lights](#) in lieu of flags will be used for this race.
- 8.2 The race will be started using RRS 26 with the warning signal made five minutes before the starting signal. The scheduled warning signal for this race will be at 1040 hrs.
- 8.3 The RMYS Tower Start line is a line between the vertical line on the centre of the western face (breakwater) race tower and RMYS mark A.
- 8.4 The RMYS Race committee may use a countdown sequence for the start on Channel 72.
- 8.5 A boat starting later than 10 minutes after her starting signal will be scored Did Not Start without a hearing. This changes rule Appendix A5.

## 9 THE COURSES.

- 9.1 RMYS Courses will be used for Race 2 of the 2021/2022 Summer Series. Descriptions of the [RMYS Squadron courses 56-93 are available for download at this link](#), A copy of these RMYS courses are displayed on page 4 of these sailing instructions.
- 9.2 The selected course for this race shall be displayed by lighted numerals on the RMYS Race Tower.

## 10. MARKS

- 10.1 [Location of RMYS marks](#) can be downloaded from this link. Details are also included in the RMYS Sailing Instruction Booklet Version 6. 2018 -2020.
- 10.2 RMYS Mark H is not part of the starting or finishing procedure for any course allocated for CYAA races.

## 11 OBSTRUCTIONS

- 11.1 St. Kilda Breakwater and RMYS Mark H.

## 12 SHORTENING or ABANDONING RACE AFTER START

- 12.1 The RMYS race committee may shorten or abandon this race in accordance with RRS.
- 12.2 When code flag S is displayed on a RMYS Race tower or committee vessel signal mast, The finish is between the adjacent rounding mark and the RMYS Race tower or committee vessel and passed through in the same direction as leaving the previous rounding mark of the allocated course.

## 13 THE FINISH.

- 13.1 The finishing line for this race will be a line between the vertical line on centre of the western face of the RMYS race tower and mark A.
- 13.2 [DP] A boat no longer racing shall promptly clear the finish area and not interfere with another boat that is racing

## 14 PENALTY SYSTEM

- 14.1 For Classic Yachts RRS 44.1 is changed so that the Two-Turns Penalty is replaced by the One-Turn Penalty.

## 15 TIME LIMIT

- 15.1 The time limit for this race (race one) shall be 180 minutes after the actual start. Boats crossing the finish line after this time has expired will be scored DNF.
- 15.2 At the expiry of the time limit, the RMYS Race Officer may advise on channel 72 that the time limit for the race has expired.

## 16 PROTESTS AND REQUESTS FOR REDRESS

- 16.1 Protests or Requests for redress shall be notified to a RMYS Race Official within two hours of the protesting yacht's finishing time and lodged in writing on the proscribed form by the following Monday.
- 16.2 Protests and request for redress will be heard at RMYS, Pier Road, St Kilda 3182 at a time set by RMYS.
- 16.3 The protest committee will consist of two members of the organising club and one member the Classic Yacht Association of Australia.

**17. SCORING.**

- 17.1 The scoring system is the Low Point System with modifications in accordance with the Notice of Race.
- 17.2 Series Aggregate Points will be allocated for the best corrected time performance based on each series entry starter's actual on course elapsed time after passing through the allocated course finish line for each race of this series.

**18. SAFETY.**

- 18.1 The race will start and continue at the Race Directors discretion. Upper wind limit for classic yacht racing is a sustained wind strength of 25 knots.
- 18.2 A boat that retires from the race is requested to notify the RMYS race committee as soon as possible on VHF Channel 72

**19 OFFICIAL BOATS**

- 19.1 Official RMYS Race Committee vessels will display the RMYS burgee.

**20. RADIO COMMUNICATION.**

- 20.1 The RMYS Race Committee will monitor VHF radio channel 72.
- 20.2 Skippers are required to maintain a dual listening watch on VHF Channels 72, 12 and 16 before, during and after racing.
- 20.3 Except in an emergency a boat shall neither make radio transmissions while racing nor receive radio communications not available to all boats. This restriction also applies to mobile telephones.
- 20.4 [DP] All boats, without exception, shall carry a VHF radio capable of receiving and transmitting on Channels 12, 16 and 72. .
- 20.5 If calls to the race committee on channel 72 receive no response VHF Channel 16 is to be used to establish communication and for switching over to an agreed working channel.

**21 RISK STATEMENT**

- 21.1 RRS 3 states: 'The responsibility for a boat's decision to participate in a race or to continue to race is hers alone.' By participating in this event each competitor agrees and acknowledges that sailing is a potentially dangerous activity with inherent risks. These risks include strong winds and rough seas, sudden changes in weather, failure of equipment, boat handling errors, poor seamanship by other boats, loss of balance on an unstable platform and fatigue resulting in increased risk of injury. **Inherent in the sport of sailing is the risk of permanent, catastrophic injury or death by drowning, trauma, hypothermia or other causes.**

**22. INSURANCE**

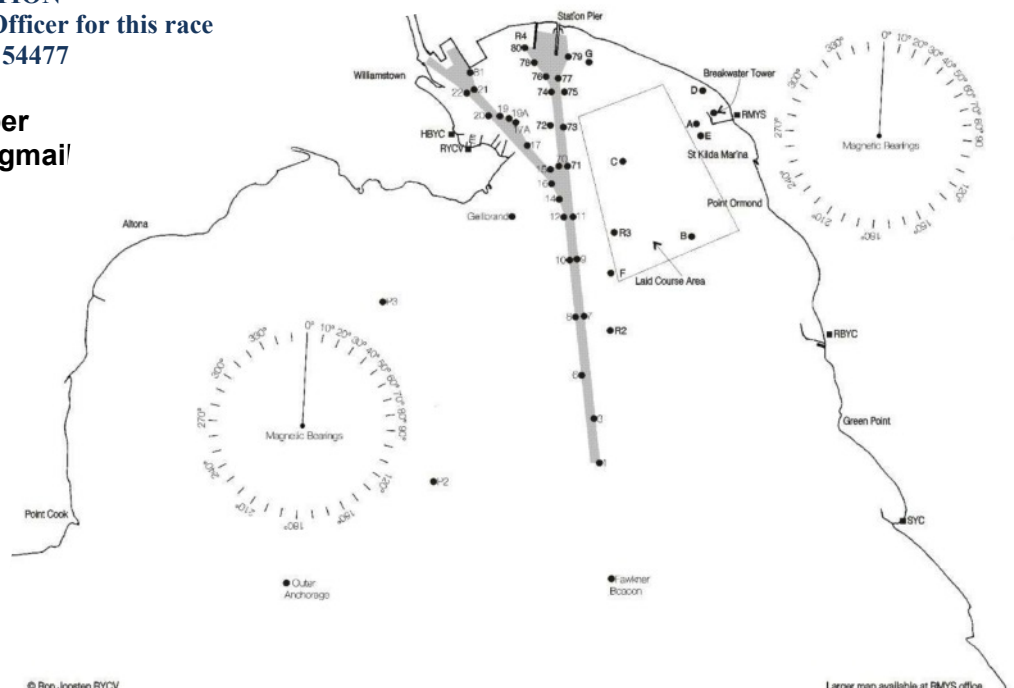
- 22.1 Each participating boat shall be insured with valid third party liability insurance with a minimum cover of \$10,000,000 per incident or the equivalent.

**23 FURTHER INFORMATION**

**RMYS Race Officer for this race  
Al Hart 0417154477**

**CYAA Handicapper  
peter.costolloe@gmail**

**Locations  
of RMYS  
Laid Marks**



Old Course Name	New Course Name	Start	122	E	256	C	39	D	170	A	Finish	Squadron Courses															nm									
1 +laps	56+laps	Start	122	E	256	C	39	D	170	A	Finish																			S	3.0X					
2+laps	57+laps	Start	350	D	219	C	76	E	302	A	Finish																				P	3.0X				
3+laps	58+laps	Start	179	B	359	A	350	D	170	A	Finish																				S	3.4X				
4+laps	59+laps	Start	350	D	170	A	179	B	359	A	Finish																				P	3.4X				
5	60	Start	350	D	219	C	140	B	359	A	179	B	359	Finish																	P	6.9				
6	61	Start	179	B	320	C	39	D	170	A	179	B	359	A	350	D	170	Finish													S	7.7				
7	62	Start	179	B	320	C	39	D	170	A	179	B	320	C	39	D	170	Finish													S	8.3				
8	63	Start	350	D	219	C	140	B	359	A	350	D	219	C	140	B	359	Finish													P	8.3				
9	64	Start	300	G	160	C	76	E	302	A	300	G	120	A	122	E	302	Finish													P	7.6				
10	65	Start		R2		C	39	D	170	A	179	B	359	A	350	D	170	Finish													S	10.3				
11	66	Start	350	D	219	C		R2		A	350	D	170	A	B		Finish													P	10.3					
12	67	Start	350	D		GB		P3		R2		Finish																		P	10.3					
13	68	Start	179	B	320	C	39	D	170	A	179	B	D	170	A	179	B													D	170	Finish	S	11.4		
14	69	Start	350	D	219	C	140	B	359	A	350	D	B	359	A	350	D													B		Finish	P	11.4		
15	70	Start	179	B	320	C	39	D	170	A	179	B	D	170	A	179	B													C	39	D	170	Finish	S	11.9
16	71	Start	350	D	219	C	140	B	359	A	350	D	B	359	A	350	D													C	140	B	359	Finish	P	11.9
17	72	Start	300	G		R2		A		R3		Finish																			S	10.8				
18	73	Start	300	G	160	C	76	E	302	A	300	G	E	302	A	300	G													C	76	E	302	Finish	P	11.6
19	74	Start		R3		P3		GB		D(S)		A	179	B	320	C	39	D	170	Finish												S	13.0			
20	75	Start		R2		D	170	A		R2		D	170	Finish																		S	12.8			
21	76	Start		R2		G		A		R3		G		Finish																		S	12.8			
22	77	Start	300	G		R2		A	300	G		R3		Finish																		P	12.8			
23	78	Start	300	G		GB		P3		R2		A	300	G		Finish																P	13.7			
24	79	Start	300	G		R2		A		R2		A	300	G		Finish																	P	13.3		
25	80	Start		R2		A		R2		G		Finish																				S	13.3			
26	81	Start		F	354	C	39	D	170	A		F	D	A		F														C		Finish	S	15.0		
27	82	Start		FWK		RYBC1		C(P)		R2		G		Finish																			18.7			
28	83	Start	300	G		R2		C		RYBC1		FWK		E		Finish																	18.9			
29	84	Start		FWK		P3		GB		D		A		R2		Finish																	20.3			
30	85	Start	300	G		R2		A	300	G		R2		A	300	G																	P	20.6		
31	86	Start	300	G		GB		P3		T1		G		Finish																		P	22.5			
32	87	Start	179	B		P3		OA		FWK		C		R2		Finish																	P	21.9		
33	88	Start		R2		G		A		R2		G		A		R3																	S	20.6		
34	89	Start		R2		OA		P3	51	D	170	A		R2		Finish																		21.9		
35	90	Start		FWK		OA		D	170	A		R2		D		Finish																		22.5		
36	91	Start		RYBC1		P2		R3		RYBC1		P2		RYBC1		E	302	Finish																25.9		
37	92	Start		RYBC1		P2		R3		RYBC1		P3		RYBC1		E	302	Finish																S	27.6	
38	93	Start		RYBC1		P3		R3		RYBC1		P3		RYBC1		E	302	Finish																	27.9	